

**COMPANY PROFILE**

# **INNOVA EPC LTD**

House: 756, Road: 10, Sec:12,  
Mirpur DOHS, Mirpur, Dhaka-  
1216, Bangladesh

+88-01712-668354  
info@innovaepc.com  
www.innovaepc.com

**ENGINEERING  
PROCUREMENT  
CONSTRUCTION**

# INNOVA

---



## The Company

INNOVA EPC LTD is a leading, diversified, multi-engineering company operating in the field of industrial and commercial plant engineering, construction and project management. As an engineering based company we have catered ourselves in most of manufacturing sectors of Bangladesh including Textiles & Garments, Pharma, Food Industry, Power Generation, Real Estate & construction, Hospitals & Lab etc.

“We don’t outsource, we design the system” - Having a vast theoretical and practical knowledge and experience, we are capable of designing the systems which we offers. We design, we construct, we manage the projects or jobs awarded to us irrespecting of project value. From a tiny project to a massive job, each one is a desired baby to us and accordingly we raise our child as a responsible parents.

We believe in Commitment, Quality and Service. All the services are supported by well maintained and seperate departments. We are a complete system builder of Industrial Mechanical Utility Systems, Dehumidification Plants, Industrial Ventilation System, HVAC Equipment and Services, Insulation Materials and Mechanical Storage Systems.

“ WE DON’T PICK A CUSTOMER, WE MAKE RELATIVES”

# SERVICES

## **Big Enough to Do the Job, Small Enough to Care**

We have the capacity to effectively handle a large range of project sizes and types. Our diverse team of experts and engineers allows us to offer a variety of services and we will customize the scope of each project to fit your needs.



### **Engineering Design & Documentation**

Design, Estimation and BOQ preparation of Steam-Water-Air Distribution System, Mechanical Ventilation System, Non HVAC Cooling System, Duct and Air Distribution System, Storage Tanks & Vessels, Dehumidification System, Air Energy Recovery system etc.



### **Projects & Supplies**

Supply, Installation, Testing & Commissioning of Steam-Water-Air System, Mechanical Ventilation system, Cooling System, Bry-Air Dehumidifier, Duct and Air Distribution system, Armacell Insulation, DRI Energy Recovery and Ventilation Equipments, Storage Tanks and vessels etc.

## **Partnering with**



## MISSION & VISION

- To be leading EPC company
  - Complete MEP support
  - Ease of access
  - 24/7 client support
  - Competent Engineered Solution
  - Best after sales services
- 

## SPECIALITY

- Best Engineering Personnel
- Complete MEP solution
- Just-in-time
- Transparency & Compatibility

**MECHANICAL UTILITY**

**DEHUMIDIFIER**

**INSULATION**

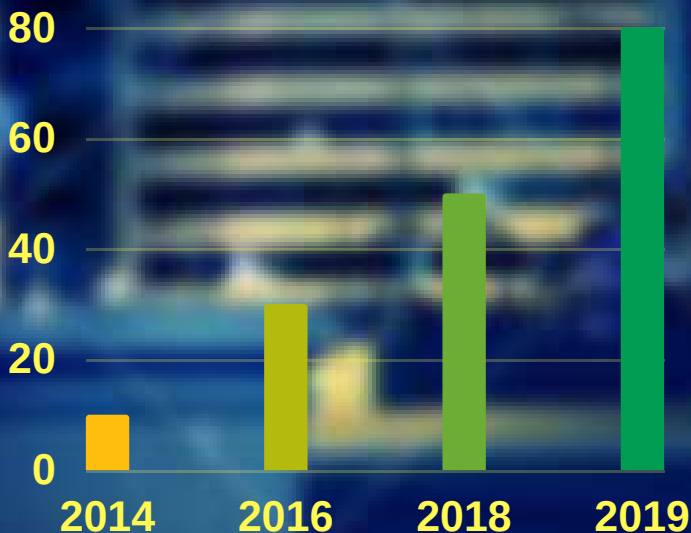
**PLASTIC AUXILIARY EQUIP.**

**VENTILATION**

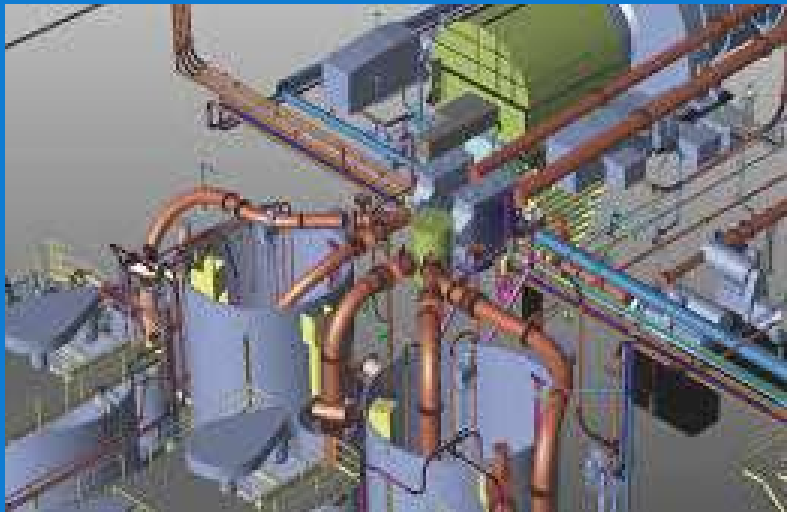
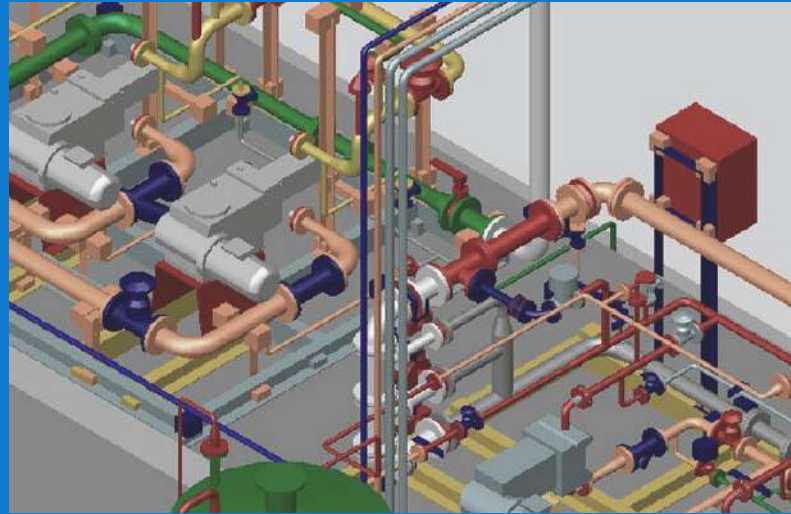
**PROCESS CHILLER**

**PUMPS**

**FABRICATION**

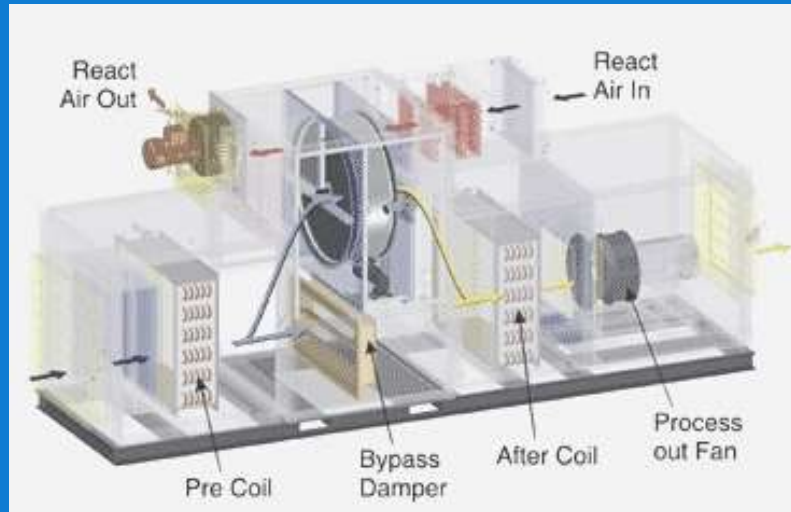


# MECHANICAL UTILITY



- I **Steam Distribution & Condensate Recovery**
- I **Compressed Air Distribution**
- I **Raw, Purified, DM Water Distribution**
- I **Chemical Transportation System**
- I **Fuel Piping System**
- I **Vacuum Distribution System**
- I **Gas Distribution System**

# DEHUMIDIFIER



- I Dehumidification Plant
- I Dry & Packing Room Dehumidification for RMG
- I Warehouse Dehumidification For RMG
- I Dehumidifier For Food Industry
- I Dehumidifier For Cold Storage
- I Dehumidifier For Power Plants
- I Dehumidifier With Cooling Unit

# INSULATION



- I Closed Cell Nitrile Rubber Insulation
- I Insulation With Colored Glass Cloth
- I Insulation With Alu Foil
- I Insulation With PET Cladding
- I Insulation With Microbial Protection
- I Acoustic Insulation For Sound Attenuation
- I Adhesive, Duct Tape, Installation Tools etc.

# PLASTIC AUXILIARY EQUIP.



- I **Mold Dehumidification System**
- I **Honeycomb Resin Dryer / Waterless Dryer**
- I **Hot Air Dryer**
- I **Pneumatic Conveying System**
- I **Mold Temperature Controller**
- I **Finished Goods Conveyor**
- I **Robots & Material Handling Equipment**



# VENTILATION



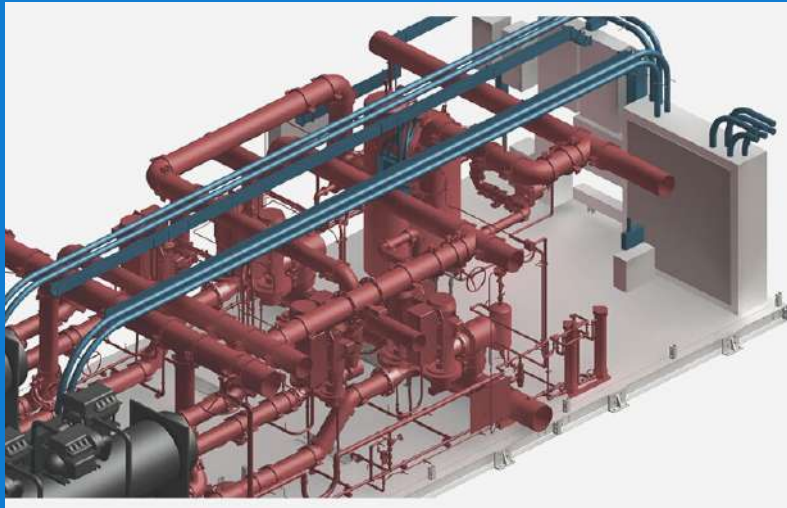
- I Industrial Ventilation System
- I Commercial ventilation System
- I Energy Recovery Ventilation System
- I Dedicated Outdoor Air System
- I Kitchenhood Ventilation
- I Air Purification System
- I Efficient & Quality Air Solution

# PROCESS CHILLER



- I Chiller For Plastic Processing
- I Chiller For Food Processing Industry
- I Chiller For Chemical & Pharma Industry
- I Chiller For Paper & Pulp Industry
- I Chiller For Printing & Packaging
- I Chiller For Process Industry
- I Chiller For Concrete Curing

# PUMPS



- I Chilled Water Distribution Pump**
- I Truly Sensor-less Pump**
- I Packaged Pumping Unit**
- I Pressure Booster Pumping Units**
- I Intelligent Fluid Management System**
- I Intelligent Plant Control System**
- I Accessories & Spares Of Fluid Pumps**

# FABRICATION



- | **Sheet Metal Fabrication**
- | **Tanks & Vessels Fabrication**
- | **Duct Fabrication**
- | **Structure Fabrication**
- | **SS Pharma Equipment Fabrication**
- | **Piping Fabrication**
- | **Customized Mechanical Fabrication**

*"Engineering is a  
Passion  
Rather than a  
Profession"*

*Find us at*

*House: 756, Road: 10, Sec: 12, Mirpur  
DOHS, Dhaka-1216, Bangladesh*

*+88 02 580 70 680  
+88 01712 66 83 54  
info@innovaepc.com  
www.innovaepc.com*

**INNOVA**

E P C L I M I T E D